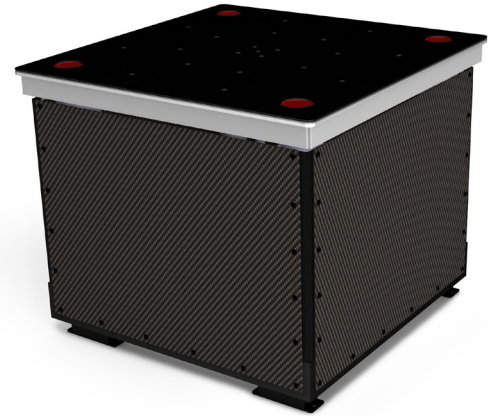


\ Datasheet: Vibration Tables



- Variable displacement of up to 30 mm, electronically controlled by closed-loop-system
- Payload capacity and configuration completely scalable up to 12,000 kg
- Off-the-shelf or completely bespoke models available
- Frequencies can be varied from 0-100Hz and the vibrations are sinusoidal

\ Description

Vibrationmaster's Vibration Tables can be used to test an enormous variety of products, components and containers – from micro-electronic components weighing as little as a few grams to light trucks weighing up to 12,000 kg. Using unique Variator technology, the tables can electronically control and vary displacement up to 30mm in real time, and vary frequencies from 0-100Hz (sine wave), enabling a wide range of test regimes to be applied.

A closed-loop system monitors and adjusts actual displacement several times per second, offering exceptional accuracy. The test bed and fixings can be varied in size and configuration according to specifications. When connected via the internet to Vibrationmaster's diagnostic servers, each Vibration Table features a troubleshooting function to optimise performance or for fault tracking.

\ Features and benefits

- Vibration Tables can be constructed featuring variable displacement of up to a maximum of 30mm, adjustable in real time using electronic controls; frequency can also be varied between 0 and 100Hz, depending on the specifications

- Customisable test bed area and fixings can be configured according to client specifications
- G-force and acceleration can be customised according to application and client specifications
- A closed-loop system maintains accuracy by comparing actual with required displacement several times a second, then adjusting settings accordingly
- Payload is completely scalable, from a few grams to 12,000kg
- No matter what the payload, displacement control and closed-loop-system accuracy are maintained.

\ Applications

- Subject products and product components to vibration tests simulating actual operating conditions
- Test packaging / shipping containers for operational performance and to determine weak points under simulated transport conditions.

Technical specifications: Vibration Tables

	VT500	Optional range
Vibration Table type	Stationary/Fixed	Movable or fixed
Amplitude/displacement	0-3mm variable during operation	Up to a maximum of 30mm variable
Frequency	3-80Hz variable during operation	3-100Hz variable during operation
Payload capacity	500 kg (1102lbs)	Scalable up to 12000 kg
Maximum acceleration	20G	Scalable to customer specification
Table size	W850mmxD850mm (W33.5xD33.5inches)	Scalable to customer specification
Table surface	2mm rubber coating	To customer specification
Vibration motion	Vertical sinusoidal	Vertical sinusoidal or horizontal sinusoidal or random motion in three axes
Closed-loop system	Yes	Yes
Control system	Tablet running Windows 7	Tablet running Windows 7
Test software	VM Test proprietary software (preloaded onto accompanying tablet PC)	VM Test proprietary software (preloaded onto accompanying tablet PC)
Voltage	Both single-phase and three-phase electrical mains supplies	Both single-phase and three-phase electrical mains supplies
Machine approval	CE	CE
Dimensions	H715xW850xD850mm (H28.2xW33.5xD33.5inches)	To customer specification
Weight	780 kg (1720lbs)	To customer specification
Grounding	Ground anchor	A grounding anchor may be required depending on the specification
Service information	Variator oil changes every 500 hours Bearing changes every 3,000 hours	A bespoke service plan will be created and supplied on delivery of the vibration table

To find out how you can benefit from our unique range of test equipment, contact us at:

Vibrationmaster ApS
 Saltgade 10-14 \ Postboks 32 \ 6760 Ribe \ Denmark

Tel. +45 53 55 53 45
 Email info@vibrationmaster.com
 Web www.vibrationmaster.com